



HEMRO International AG

Distributor training: Mahlkönig E80S / E80S GbW

June 2022



ditting



Content

- 01** Product overview
- 02** Product service
- 03** Information handouts



Mahlkönig E80S / GbW: model and option overview

Bean hoppers

- 250g : article 700995
- 1.200g : article 703328
- 1.800g : article 703071 (standard delivery option)

Burr options & grinding speed

- : article 701619 - 80mm special steel, 6-8g per second
- : article 105780 - 80mm premium cast steel, 6-8g per second

Body colors

- : black matte, white matte

Portafilter holders

- Standard : article 700708 (standard delivery option)
- 54mm narrow option : article 100548
- Wide adjustment option : article 700802

Motor configurations

- 100V 50/60Hz; 1.400 – 1.700 rpm
- 110-127V 60 Hz ; 1.400 – 1.700 rpm
- 220-240V 50/60Hz ; 1.400 – 1.700 rpm

Coffee can adapters

- Illy Caffé / UCC Coffee : article 703724 / article 703476

Weight (net / gross)

- : 17,6 kg / 18.5 kg

Dimensions

- : 24 x 63 x 34cm

Packaging dimensions

- : 69.7 x 28.7 x 47.5cm



Mahlkönig E80S / GbW: notable features at a glance

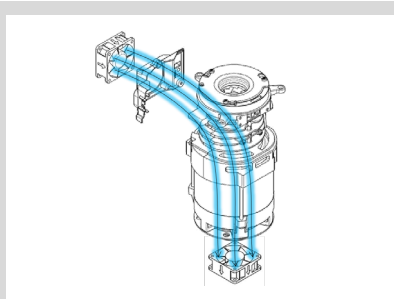
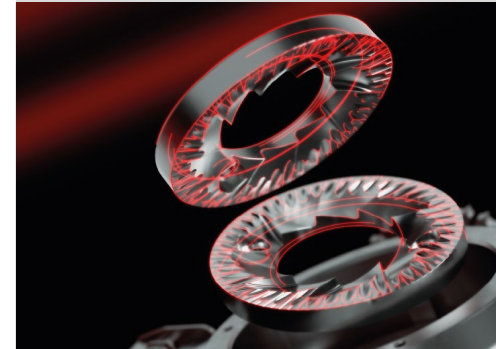
Ease of maintenance and service



Real-time grind-by-weight, PFD and DDD-technology



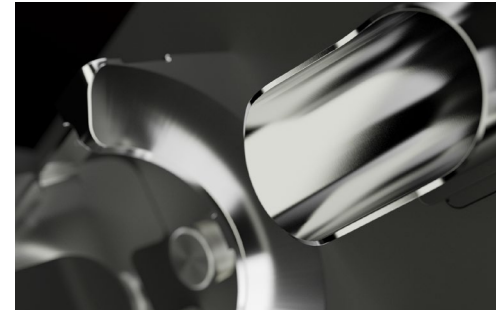
Record grinding speed, dosing consistency and zero retention



Active cooling for heavy duty cycles >100kg / day



Premium design with durable components



Highest electrical safety and food hygiene standards

Mahlkönig GbW: how to ensure accurate dosing within +/- 0,1g of target weight (average deviation measured over 100 shots)

Four key success factors for accurate dosing

1. Cautiously lift grinder out of the box by holding it on the baseplate and backside; do not lift by the portafilter holder to prevent heavy loadcell overload that may damage / de-calibrate the grinder

2. Stable surface underneath grinder without vibration or interference

3. Minimum weekly calibration of the weight cell with calibration weight Hemro article 703000*

4. Minimum weekly cleaning of the grinding chamber and flapper

* Why is this article not included in the delivery?

1. **International shipping cost** from increased weight
2. **Manufacturer requirement to sell certified gauged weights** far above market price of standard weights

Mahlkönig E80S / GbW: key sales arguments

E80S / GbW is the fastest grinder in the market at present. Its output exceeds most 65mm competitors by more than 100% and most 80mm+ models by more than 50%.

E80S / GbW is the only grinder in the market to withstand over 50kg per day without overheating or losing consistency → **One E80S replaces two competitor grinders in less space**

Chain customers point out that E65S and E80S are significantly easier to train in their academies than competitor models due to simple operation of key areas such as grind size adjustment, portafilter holder and grinding itself

Mahlkönig is still the only manufacturer with “real-time” grind-by-weight technology. Competitor “GbW models” augment time-based models to mimic GbW but cannot achieve the workflow or taring speed because of a lack of specific hard- and software.

→ **Mahlkönig GbW features nearly the same workflow as time-based grinders**

→ **Competitor models require significant extra processes and are uncompetitively slow**

Content

- 01 Product overview
- 02 Product service**
- 03 Information handouts



Disclaimer



WARNING:

The contents shown in this section are meant to support qualified technicians and trained staff only. Only parts that comply with the original appliance specification may be used for repairs. Errors in opening or assembling the machine may cause injuries and/or damages and malfunctions. If the machine is opened by an unauthorized person the manufacturer's liability and warranty expire.

Often overlooked in the quest for best taste and operations performance: the relevance of equipment maintenance

Benefits of regular grinder maintenance

More aroma extraction due to lower grinding temperatures

Exact recipe execution due to higher dosing consistency

Clearer taste due to lack of coffee residues and cross contamination

Reduced costs due to longer equipment life, esp. burrs

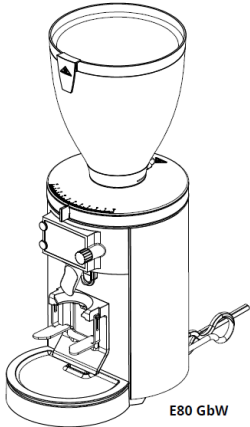
“Insufficient maintenance of key equipment always results in poor quality in the cup regardless of raw materials”

Main service resources: spare part list in the Mahlkönig website dealer section and YouTube service videos

ERSATZTEILLISTE | SPARE PARTS LIST

Version 1.0

E80 GbW 100 V 50/60 Hz | 110-127 V 60 Hz | 220-240 V 50/60 Hz



E80 GbW

Bei Bestellungen bitte unbedingt die Artikel- und Seriennummer angeben.
Please indicate the article- and serial number when ordering.

WARNUNG:
Diese Ersatzteilliste richtet sich ausschließlich an qualifizierte Techniker und geschultes Fachpersonal. Fehler beim Öffnen oder Montieren der Mühle können zu Verletzungen und/oder Beschädigungen und Fehlfunktionen führen. Bei Reparaturen dürfen nur Teile verwendet werden, die den ursprünglichen Gerätedaten entsprechen.
Mit dem Öffnen der Mühle durch eine nicht autorisierte Person, erlöschen die Haftungs- und Garantieansprüche gegenüber dem Hersteller.


WARNING:
This spare part list is meant to support qualified technicians and trained staff, only. Only parts that comply with the original appliance specification may be used for repairs. Mistakes in opening or assembling the grinder may cause injuries and/or damages and malfunctions.
If the grinder gets opened by an un-authorized person, the manufacturer's liability and warranty expire.

gültig ab | valid from
2022.04.01

Änderungen ohne Vorankündigung vorbehalten. | Subject to change without prior notice.


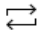
HEMRO

Hemro International AG
Länggasse 34 | 8184 Bachmattbühl, Switzerland
T: +41 44 864 19 00 | F: +41 44 864 19 01
info@hemrogroup.com | www.hemrogroup.com



Mahlkönig E80 Supreme | Service & Repair

Mahlkoenig - 1 / 9



▶

E80 Supreme

Clean the grinding mechanism

2:57

Mahlkoenig

2

E80 Supreme

Quick start guide

2:36

Mahlkoenig

3

E80 Supreme

Flapper replacement

0:55

Mahlkoenig

4

E80 Supreme

DDD calibration

1:22

Mahlkoenig

5

E80 Supreme

General settings

1:19

Mahlkoenig

6

E80 Supreme

Burr replacement

7:11

Mahlkoenig

7

E80 Supreme

Software update without web server

3:33

Mahlkoenig

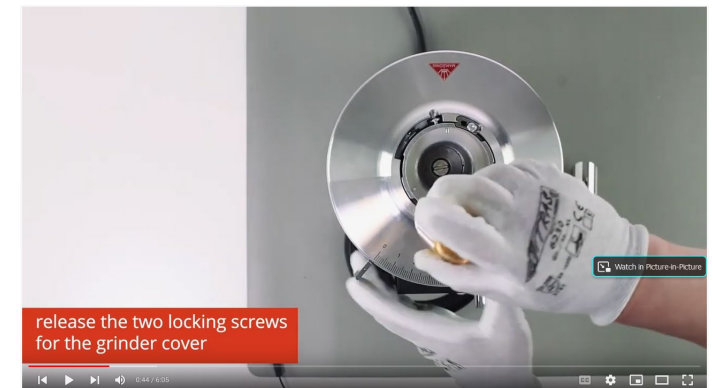
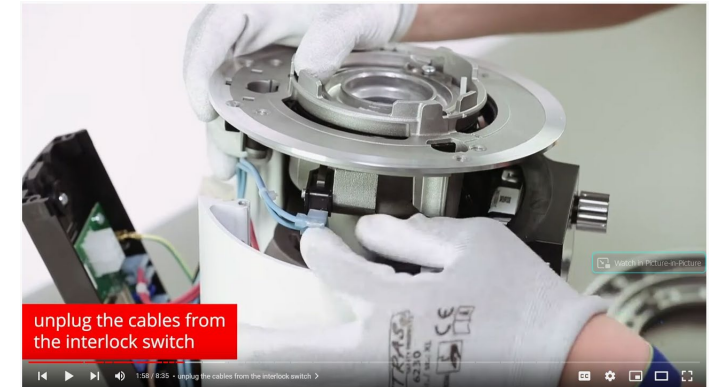
8

E80 Supreme

Control unit and display replacement

9:16

Mahlkoenig



YouTube Service & Repair Mahlkönig E80S
<https://www.youtube.com/watch?v=xtoV2gUQLMw&list=PL6PDLeLQefbO-Rv5OoE7AJ-eHq3RypCb>*

* Service videos for Mahlkönig E80S GbW expected to be completed within August 2022

Mahlkönig E80S GbW: build overview and frequent service parts

Spout assembly attachment: article 703204

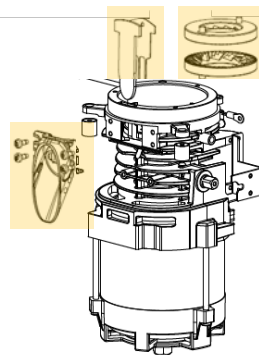
- Damage due to rough handling in use or transport

Flapper: article 704024

- Replenishable that causes grinder spray at end of life

Burrs: article 701619 (steel) or 105780 (cast steel)

- Replenishable that causes heat, dosing inconsistency and undesirable taste at end of life

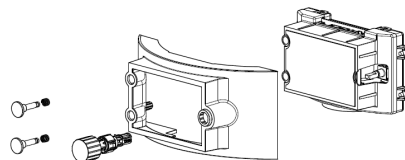


Display control unit: article 704253 with frame 703180

- Damage from cold solder joints, cables, dust, moisture

Display hard keys : article 703182

- Damage due to rough handling or breakage of dial encoders



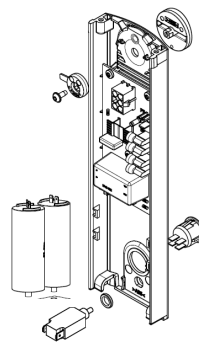
Back panel with power boards: articles 704255 (100V), 704256 (110-127V), 704257 (220-240V)

- Damage from heat, dust, moisture, solder joints or triac end of life

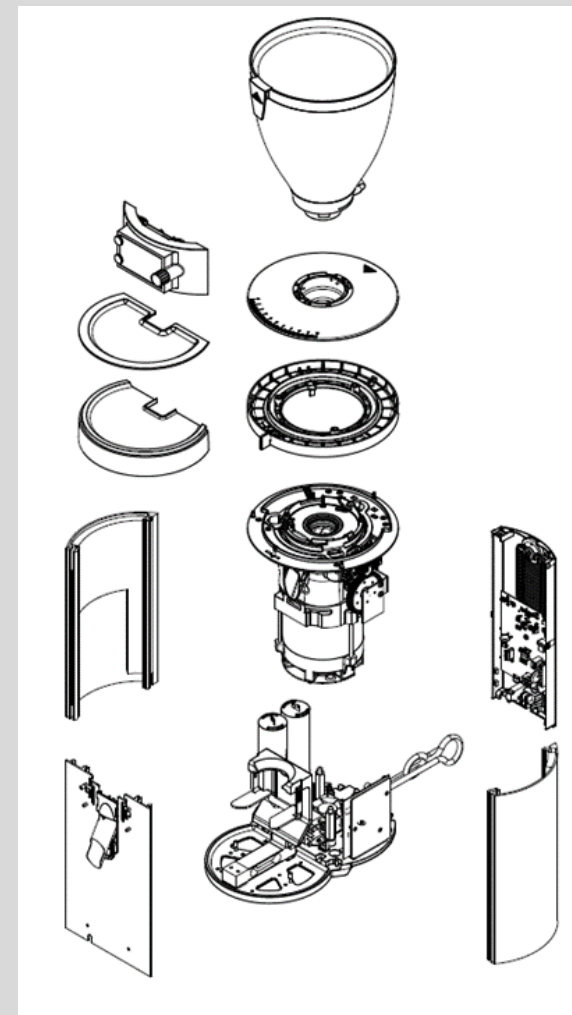
Capacitors: articles 702579 (2x; 100-127V), 702577 (2x; 220-240V)

- Replenishable that causes power loss / start failure at end of life

Overcurrent switches: articles 702383 (100V), 308383 (110-127V), 309551 (220-240V)



Overview grinder construction



Mahlkönig E80S GbW: recommended parts* and service contacts

Part	Part #	Part	Part #
Power switch On/Off Mahlkönig E80S, E80S GbW		Grind size transmission Mahlkönig E80S, E80S GbW	703096
Power switch On/Off Ditting 807	702979	Disc distance detection (DDD) board Mahlkönig E80S, E80S GbW	703097
Fan with cable length 790mm Mahlkönig E80S, E80S GbW	703099	Grinder top cover Mahlkönig E80S, E80S GbW	703101
Fan with cable length 790mm Mahlkönig E65S GbW, E80S, E80S GbW	703186	Grinder top cover adapter Mahlkönig E80S, E80S GbW	703152
Grinder Cleaner GRINDZ (1 can)	101853		
Special grease NSF/H1 50 g	105168	Grinder top cover small part set Mahlkönig E65S, E65S GbW, E80S, E80S GbW	703153
80 mm premium cast steel burrs for Mahlkönig E80S, E80S GbW, PEAK		Grinder top cover small part set Anfim Pratica	
80 mm premium cast steel burrs for Ditting 804 Lab Sweet, 807 Lab Sweet, PEAK	105780		
Circuit breaker 110-127V Mahlkönig E65S, E65S GbW, E80S, E80S GbW, K30, K30 2.0, PEAK		Grind size adjustment ring set Mahlkönig E80S, E80S GbW	703165
Circuit breaker 110-127V Anfim Pratica, Solida	308383	Interlock mechanic Mahlkönig E80S, E80S GbW	703167
Circuit breaker 110-127V Ditting 807, KE640, KE640 2.0, PEAK		Display hard keys Mahlkönig E65S GbW, E80S, E80S GbW	703182
Circuit breaker 220-240V Mahlkönig E65S, E65S GbW, E80S, E80S GbW, K30, PEAK		Spout fixation Mahlkönig E80S, E80S GbW	703204
Circuit breaker 220-240V Anfim Pratica, Solida	309551		
Circuit breaker 220-240V Ditting 807		Seal ring grinder top cover adapter Mahlkönig E65S, E65S GbW, E80S, E80S GbW	703270
Unlocking lever & sliding pins adjustment ring Mahlkönig E65S, E65S GbW, E80S, E80S GbW		Seal ring grinder top cover adapter Anfim Pratica, Solida	
Unlocking lever & sliding pins adjustment ring Anfim Pratica, Solida	700700		
Grind size adjustment handle Mahlkönig E65S, E65S GbW, E80S, E80S GbW	700701	Tool for disc removal Mahlkönig E80S, E80S GbW	703290
Spout pipe Mahlkönig E65S, E65S GbW, E80S, E80S GbW		Tool for disc removal Ditting 807	
Spout pipe Anfim Pratica	700707		
Grind size adjustment lock Mahlkönig E65S, E65S GbW, E80S, E80S GbW		Load cell Mahlkönig E65S GbW, E80S GbW	703298
Grind size adjustment lock Anfim Pratica, Solida	700711	Portafilter holder Mahlkönig E65S GbW, E80S GbW	703299
Interlock switch Mahlkönig E65S, E65S GbW, E80S, E80S GbW		Portafilter support Mahlkönig E65S GbW, E80S GbW	703302
Interlock switch Anfim Pratica, Solida	700712	Bean hopper 1,2 kg Mahlkönig E65S, E65S GbW, E80S, E80S GbW	703328
Grinder feet Mahlkönig E65S, E65S GbW, E80S, E80S GbW, X54			
Grinder feet Anfim Pratica, Solida	700727	Spout angle adjustment Mahlkönig E65S, E65S GbW, E80S, E80S GbW	703329
Bean hopper 0,25 kg Mahlkönig E65S, E65S GbW, E80S, E80S GbW		Spout angle adjustment Anfim Pratica	
Bean hopper 0,25 kg Anfim Pratica	700995		
80 mm special steel burrs for Mahlkönig E80S, E80S GbW	701619	Adapter for UCC coffee cans Mahlkönig E65S, E65S GbW, E80S, E80S GbW	703476
Circuit breaker 100V Mahlkönig E65S, E65S GbW, E80S, E80S GbW, K30, PEAK		Adapter for UCC coffee cans Anfim Pratica	
Circuit breaker 100V Anfim Pratica, Solida	702383	Power board GbW-unit Mahlkönig E65S GbW, E80S GbW	703519
Circuit breaker 100V Ditting 807			
Fixed burr carrier Mahlkönig E80S, E80S GbW		Adapter for Illy coffee cans Mahlkönig E65S, E65S GbW, E80S, E80S GbW	703724
Fixed burr carrier Ditting 807	702566	Adapter for Illy coffee cans Anfim Pratica	
Capacitor 16µF, 220-240V Mahlkönig E65S, E65S GbW, E80S, E80S GbW		Non-slip pad base plate E65S, E65 GbW, E80S, E80S GbW	703725
Capacitor 16µF, 220-240V Anfim Pratica, Solida	702577	Non-slip pad base plate Ditting 807	
Capacitor 16µF, 220-240V Ditting 807		Non-slip pad base plate Anfim Pratica, Solida	
EMC-Filter 220-240V Mahlkönig E80S GbW, E80S			
EMC-Filter 220-240V Ditting 807	702578	Silicone & metal flapper Mahlkönig E80S GbW, E80S	704024
Capacitor 80µF, 100-127V Mahlkönig E80S, E80S GbW		Shock absorbers (3x) Mahlkönig E80S, E80S GbW	704047
Capacitor 80µF, 100-127V Ditting 807	702579	Load cell cover Mahlkönig E80S GbW	704209
Relay 100-127V Mahlkönig E80S, E80S GbW		Load cell shimming plate Mahlkönig E80S GbW	704210
Relay 100-127V Ditting 807	702581	Drip tray Mahlkönig E80S GbW	704211
Calibration weight Mahlkönig E65S GbW, E80S GbW	703000	Display control unit Mahlkönig E80S GbW	704253
Bean hopper 1,8 kg Mahlkönig E65S, E65S GbW, E80S, E80S GbW	703071	Back panel with power board 100V Mahlkönig E80S GbW	704255
Flapper Mahlkönig E80S GbW, E80S	703092	Back panel with power board 110-127V Mahlkönig E80S GbW	704256
Motor drive unit 200-240V 50/60 Hz Mahlkönig E80S, E80S GbW		Back panel with power board 220-240V Mahlkönig E80S GbW	704257
Motor drive unit 200-240V 50/60 Hz Ditting 807	703093		
Motor drive unit 110-127V 60 Hz Mahlkönig E80S, E80S GbW		EMC-Filter 100-127V Mahlkönig E80S GbW, E80S	704264
Motor drive unit 110-127V 60 Hz Ditting 807	703094	EMC-Filter 100-127V Ditting 807	
Motor drive unit 100V 50/60 Hz Mahlkönig E65S, E65S GbW			
Motor drive unit 100V 50/60 Hz Ditting 807	703095		
Grind size transmission Mahlkönig E80S, E80S GbW	703096		

Mahlkönig E-Shop for Spare Parts



SPARE PARTS FOR E80S GBW

The E80S GbW combines record grinding speed with Mahlkönig's real-time Grind-by-Weight technology and innovative Disc Distance Detection feature. Shop available spare parts for this model.

[FIND YOUR DEALER](#)

We cooperate with sales and service partners in more than 70 countries around the globe. Find the dealer that is closest to you and get into contact.

[Home](#) > [Spare Parts for E80S GbW](#)

Link:

<https://www.mahlkoenig.de/collect-ions/spare-parts-for-e80s-gbw>

For part or technical support, please contact:

- Service-center
@hemrogroup.com
- Productmanagement
@hemrogroup.com

*Please contact your sales or product management representative for recommended spare parts lists

Mahlkönig E80S / GbW: frequently encountered problems (1/2)

Problem : significant grinder spray in one direction out of the spout pipe

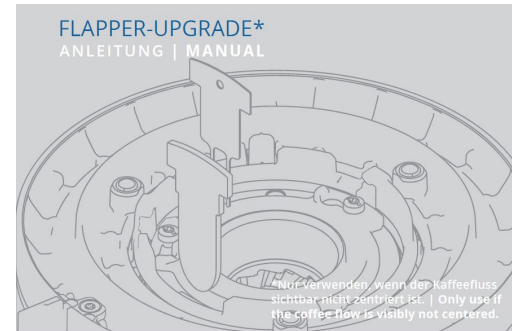
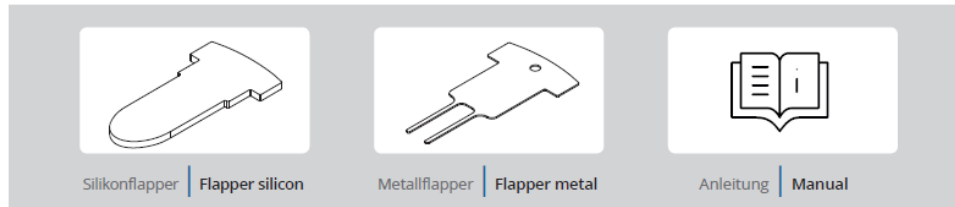
Cause : coffee types with high degree of residual moisture clump around the grinding house outlet and impair the function of the silicone standard flapper, causing spray

Solution : introduction of high volume flapper kit including stainless steel flapper insert (article 701856)

VERWENDUNG SZWECK | PURPOSE

Mahlkönig E65S | Ditting E65S | Anfim PRATICA

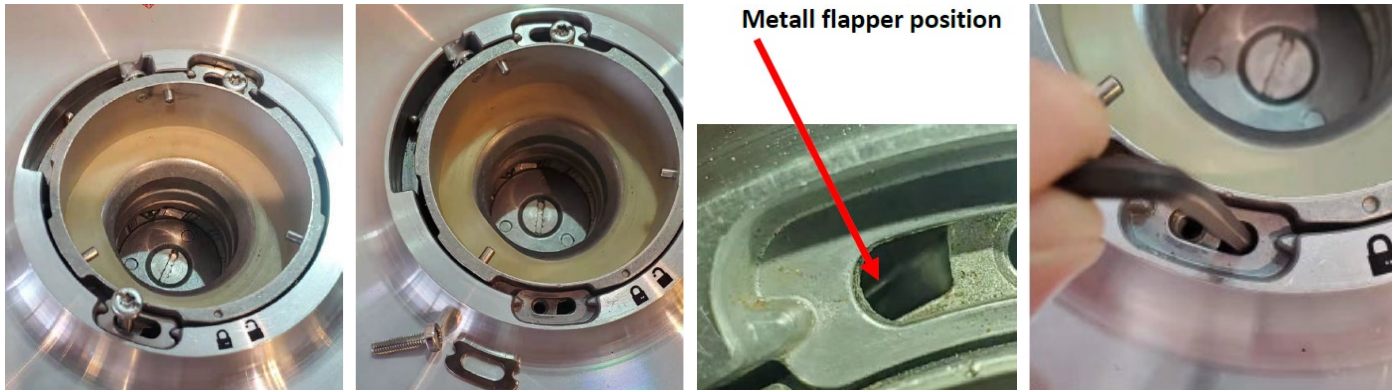
LIEFERUMFANG | CONTAIN



Problem : grinder top cover cannot be released and removed

Cause : metal flapper was pushed upward during operation and mechanically blocks the release mechanism

Solution : remove top cover screws and washer plates → locate metal flapper and push down until mechanism moves freely



Mahlkönig E80S / GbW: frequently encountered problems (2/2)

Problem : grinder does not stop grinding upon recipe completion / grinder immediately starts grinding when portafilter is inserted
Cause : yellow “rescue switch” on the bottom right side of the display frame is pushed in, disabling the GbW function to enable manual grinding mode
Solution : disengage yellow “rescue switch” by pushing it again

Problem : grinder does not dose accurately or does not recognize portafilters in portafilter detection mode
Cause : grinder is not calibrated or mechanical weight cell overload protection is not correctly situated
Solution 1 : perform weight cell calibration
Enter owner level (Main menu → Password → 6781)
Enter service menu (Main menu → Service)
Perform weight cell calibration

Solution 2 : Re-position mechanical overload protection into the center of the base

Problem : grinder is slow to tare before starting the grinding process in grind-by-weight mode
Cause : grinder is not situated on a stable surface or GbW-Resolution is set to “high” in Internal Presets
Solution : re-situate grinder on a stable surface or reset GbW-Resolution to “low” in Internal Presets
Enter service level (Main menu → Password → 9512867)
Enter internal presets menu (Main menu → Service → Internal Presets)
Set GbW-Resolution to low

Content

- 01 Product overview
- 02 Product service
- 03 Information handouts**



Recommended tools for performing Hemro maintenance and service

Tools	Reference parts
<ul style="list-style-type: none"> ▪ 1x ¼ inch torque wrench ▪ 1x universal ¼ inch bit set in short and long configurations ▪ 1x 13mm combination wrench ▪ 1x Wire cutter ▪ 1x Telescope magnet for lost screws ▪ 1x Cable stripper ▪ 1x Long pliers ▪ Pulling tool Mahlkönig EK43, DK15, VTA6S ▪ Pulling tool Mahlkönig Guatemala 2.0 ▪ Burr change tool 65mm (Mahlkönig E65S, Mahlkönig E65S GbW, Anfim Pratica, Anfim Solida) ▪ Burr change tool 80mm (Mahlkönig E80, Mahlkönig E80 GbW, Ditting 807) ▪ Burr alignment tool Mahlkönig K30x ▪ Burr alignment tool Mahlkönig EK43 ▪ Special grease NSF/H1 50g ▪ Special lubrication NSF/H1 60g ▪ Soft bristle brush ▪ Multimeter (20A) ▪ Digital coffee scale ▪ Windows-PC for software updates 	<ul style="list-style-type: none"> ▪ Würth 071471 91 ▪ Würth 061425059 ▪ Würth 071330213 ▪ Würth 071401571 ▪ Würth 07153535 ▪ Würth 071401570 ▪ Würth 071401578 ▪ Hemro 703750 ▪ Hemro 703048 ▪ Hemro 700974 ▪ Hemro 703290 ▪ Hemro 306590 ▪ Hemro 105866 ▪ Hemro 105168 ▪ Hemro 309336 ▪ / - Any ▪ / - Any ▪ / - Any ▪ / - Any

Mahlkönig E80S / GbW: frequently asked service questions

Where is this grinder manufactured?

The Mahlkönig E80S / E80S GbW is made in the Mahlkönig plant in Hamburg, Germany. All burrs for Hemro Group's products are produced in the Mahlkönig plant in Hamburg, Germany.

My grinder is not turning on and the display is black – what can I do?

Please check whether the grinder is plugged in, whether the power switch on the backside of the grinder is engaged and whether a bean hopper is safely attached to the grinder.

My grinder turns off during operation – what can I do?

Please ensure the bean hopper is attached completely and safely and the bean hopper safety screw is engaged. If the bean hopper loosens during operation, the grinder will turn itself off.

My grinder sprays coffee towards one side of the spout – what can I do?

During normal operation coffee accumulates and ages inside the grinding house around the spout outlet, especially when the silicone flapper is not frequently cleaned. Please perform a standard cleaning cycle with GRINDZ, remove and clean the silicone flapper and ensure that the metal wire flapper is installed in the correct position.

How often do I need to clean my grinder and why?

We recommend to clean all food service equipment daily; minimum weekly. Old coffee in the grinding house adversely affects taste and clogs the chute, causing aroma-loss from additional heat and spraying.

Where do I find information resources for this grinder?

The dealer section of the Mahlkönig website always includes the latest product sheets, product presentations, price lists, spare part lists and other publications. For service-related information please consult our service YouTube Playlist and Online-Shop

- https://www.youtube.com/watch?v=xtoV2gUQLMw&list=PL6PDLeLQefbO_-Rv5OoE7AJ-eHq3RypCb
- <https://www.mahlkoenig.de/collections>

Mahlkönig E80S: build overview and frequent service parts

Spout assembly attachment: article 703204

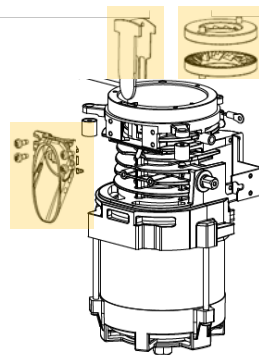
- Damage due to rough handling in use or transport

Flapper: article 704024

- Replenishable that causes grinder spray at end of life

Burrs: article 701619 (steel) or 105780 (cast steel)

- Replenishable that causes heat, dosing inconsistency and undesirable taste at end of life

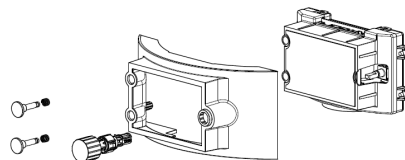


Display control unit: article 703181 with frame 703180

- Damage from cold solder joints, cables, dust, moisture

Display hard keys : article 703182

- Damage due to rough handling or breakage of dial encoders



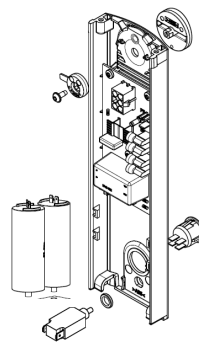
Back panel with power boards: articles 703178 (100V), 703177 (110-127V), 703176 (220-240V)

- Damage from heat, dust, moisture, solder joints or triac end of life

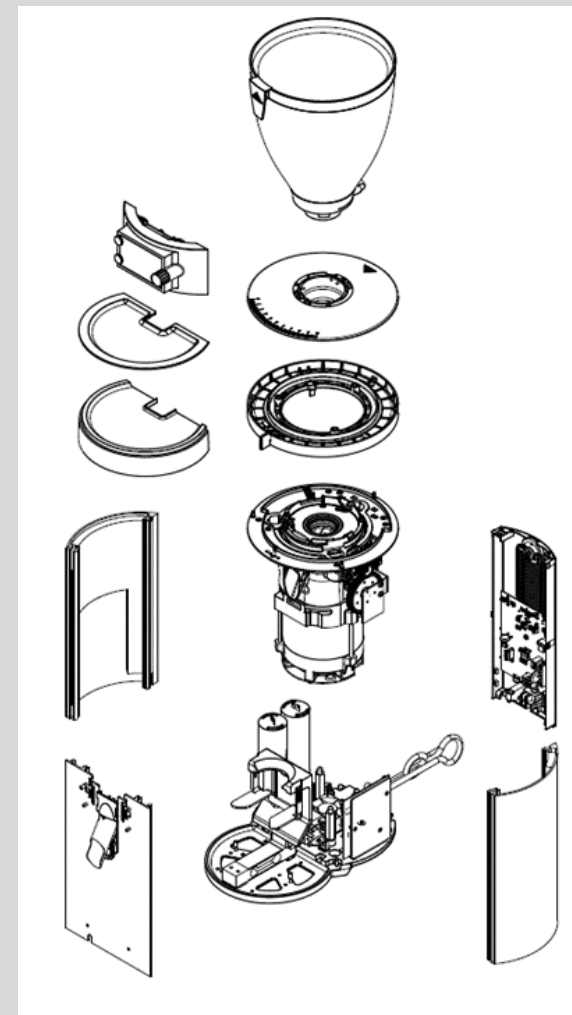
Capacitors: articles 702579 (2x; 100-127V), 702577 (2x; 220-240V)

- Replenishable that causes power loss / start failure at end of life

Overcurrent switches: articles 702383 (100V), 308383 (110-127V), 309551 (220-240V)



Overview grinder construction



Mahlkönig E80S: recommended parts* and service contacts

Part	Part #	Part	Part #
Power switch On/Off Mahlkönig E80S , E80 GbW	702979	Capacitor 80µF, 100-127V Mahlkönig E80S , E80 GbW	702579
Power switch On/Off Ditting 807		Capacitor 80µF, 100-127V Ditting 807	
Fan with cable length 790mm Mahlkönig E80S , E80 GbW	703099	Relay 100-127V Mahlkönig E80S , E80 GbW	702581
Fan with cable length 790mm Mahlkönig E65S GbW, E80S , E80 GbW	703186	Relay 100-127V Ditting 807	
Grinder Cleaner GRINDZ (1 can)	101853	Bean hopper 1,8 kg Mahlkönig E65S, E65S GbW, E80S , E80 GbW	703071
Special grease NSF/H1 50 g	105168	Flapper Mahlkönig E80 GbW, E80S	703092
80 mm premium cast steel burrs for Mahlkönig E80S , E80 GbW, PEAK	105780	Motor drive unit 200-240V 50/60 Hz Mahlkönig E80S , E80 GbW	703093
80 mm premium cast steel burrs for Ditting 804 Lab Sweet, 807 Lab Sweet, PEAK		Motor drive unit 200-240V 50/60 Hz Ditting 807	
Portafilter support Dalla Corte 54mm Mahlkönig E65S, E80S , K30, K30 2.0, K30 TWIN, K30 TWIN 2.0	306718	Motor drive unit 110-127V 60 Hz Mahlkönig E80S , E80 GbW	703094
Portafilter support Dalla Corte 54mm Ditting E65S, KE640, KE640 2.0, KED640, KED640 2.0		Motor drive unit 110-127V 60 Hz Ditting 807	
Portafilter support Dalla Corte 54mm Anfim Pratica		Motor drive unit 100V 50/60 Hz Mahlkönig E65S, E65S GbW	703095
Geräteschutzschalter 110-127V Mahlkönig E65S, E65S GbW, E80S , E80 GbW, K30, K30 2.0, PEAK	308383	Motor drive unit 100V 50/60 Hz Ditting 807	
Geräteschutzschalter 110-127V Anfim Pratica, Solida		Grind size transmission Mahlkönig E80S , E80 GbW	703096
Geräteschutzschalter 110-127V Ditting 807, KE640, KE640 2.0, PEAK		Disc distance detection (DDD) board Mahlkönig E80S , E80 GbW	703097
Circuit breaker 220-240V Mahlkönig E65S, E65S GbW, E80S , E80 GbW, K30, PEAK	309551	Grinder top cover Mahlkönig E80S , E80 GbW	703101
Circuit breaker 220-240V Anfim Pratica, Solida		Button On/Off Portafilter Mahlkönig E80S	703113
Circuit breaker 220-240V Ditting 807		Grinder top cover adapter Mahlkönig E80S , E80 GbW	703152
Unlocking lever & sliding pins adjustment ring Mahlkönig E65S, E65S GbW, E80S , E80 GbW	700700	Grinder top cover small part set Mahlkönig E65S, E65S GbW, E80S , E80 GbW	703153
Unlocking lever & sliding pins adjustment ring Anfim Pratica, Solida		Grinder top cover small part set Anfim Pratica	
Grind size adjustment handle Mahlkönig E65S, E65S GbW, E80S , E80 GbW	700701	Grind size adjustment ring set Mahlkönig E80S , E80 GbW	703165
Spout pipe Mahlkönig E65S, E65S GbW, E80S , E80 GbW	700707	Interlock mechanic Mahlkönig E80S , E80 GbW	703167
Spout pipe Anfim Pratica		Back panel with power board 220-240V Mahlkönig E80S	703176
Portafilter support Mahlkönig E65S, E80S	700708	Back panel with power board 100-127V Mahlkönig E80S	703177
Portafilter support Anfim Pratica		Back panel with power board 100V Mahlkönig E80S	703178
Grind size adjustment lock Mahlkönig E65S, E65S GbW, E80S , E80 GbW	700711	Display control unit Mahlkönig E80S	703181
Grind size adjustment lock Anfim Pratica, Solida		Display hard keys Mahlkönig E65S GbW, E80S , E80 GbW	703182
Interlock switch Mahlkönig E65S, E65S GbW, E80S , E80 GbW	700712	Spout fixation Mahlkönig E80S , E80 GbW	703204
Interlock switch Anfim Pratica, Solida		Drip tray Mahlkönig E80S	703224
Portafilter holder Mahlkönig E65S, E80S	700713	Non-slip pad base plate E65S, E65 GbW, E80S , E80 GbW	703725
Portafilter holder Anfim Pratica		Non-slip pad base plate Ditting 807	
Grinder feet Mahlkönig E65S, E65S GbW, E80S , E80 GbW, X54	700727	Non-slip pad base plate Anfim Pratica, Solida	
Grinder feet Anfim Pratica, Solida		Seal ring grinder top cover adapter Mahlkönig E65S, E65S GbW, E80S , E80 GbW	703270
Bean hopper 0,25 kg Mahlkönig E65S, E65S GbW, E80S , E80 GbW	700995	Seal ring grinder top cover adapter Anfim Pratica, Solida	
Bean hopper 0,25 kg Anfim Pratica		Tool for disc removal Mahlkönig E80S , E80 GbW	703290
80 mm special steel burrs for Mahlkönig E80S , E80 GbW	701619	Tool for disc removal Ditting 807	
Circuit breaker 100V Mahlkönig E65S, E65S GbW, E80S , E80 GbW, K30, PEAK	702383	Bean hopper 1,2 kg Mahlkönig E65S, E65S GbW, E80S , E80 GbW	703328
Circuit breaker 100V Anfim Pratica, Solida		Adapter for UCC coffee cans Mahlkönig E65S, E65S GbW, E80S , E80 GbW	703476
Circuit breaker 100V Ditting 807		Adapter for UCC coffee cans Anfim Pratica	
Fixed burr carrier Mahlkönig E80S , E80 GbW	702566	Adapter for Illy coffee cans Mahlkönig E65S, E65S GbW, E80S , E80 GbW	703724
Fixed burr carrier Ditting 807		Adapter for Illy coffee cans Anfim Pratica	
Capacitor 16µF, 220-240V Mahlkönig E65S, E65S GbW, E80S , E80 GbW	702577	Silicone & metal flapper Mahlkönig E80 GbW, E80S	704024
Capacitor 16µF, 220-240V Anfim Pratica, Solida		Shock absorbers (3x) Mahlkönig E80S , E80 GbW	704047
Capacitor 16µF, 220-240V Ditting 807		EMC-Filter 100-127V Mahlkönig E80 GbW, E80S	704264
EMC-Filter 220-240V Mahlkönig E80 GbW, E80S	702578	EMC-Filter 100-127V Ditting 807	
EMC-Filter 220-240V Ditting 807			

Mahlkönig E-Shop for Spare Parts



Home > Spare Parts for E80S

SPARE PARTS FOR E80S

The E80S sets the new benchmark in premium espresso grinding. It provides top notch grinding speed and effortlessly keeps up with high daily capacities. Shop available spare parts for this model.

[FIND YOUR DEALER](#)

We cooperate with sales and service partners in more than 70 countries around the globe. Find the dealer that is closest to you and get into contact.

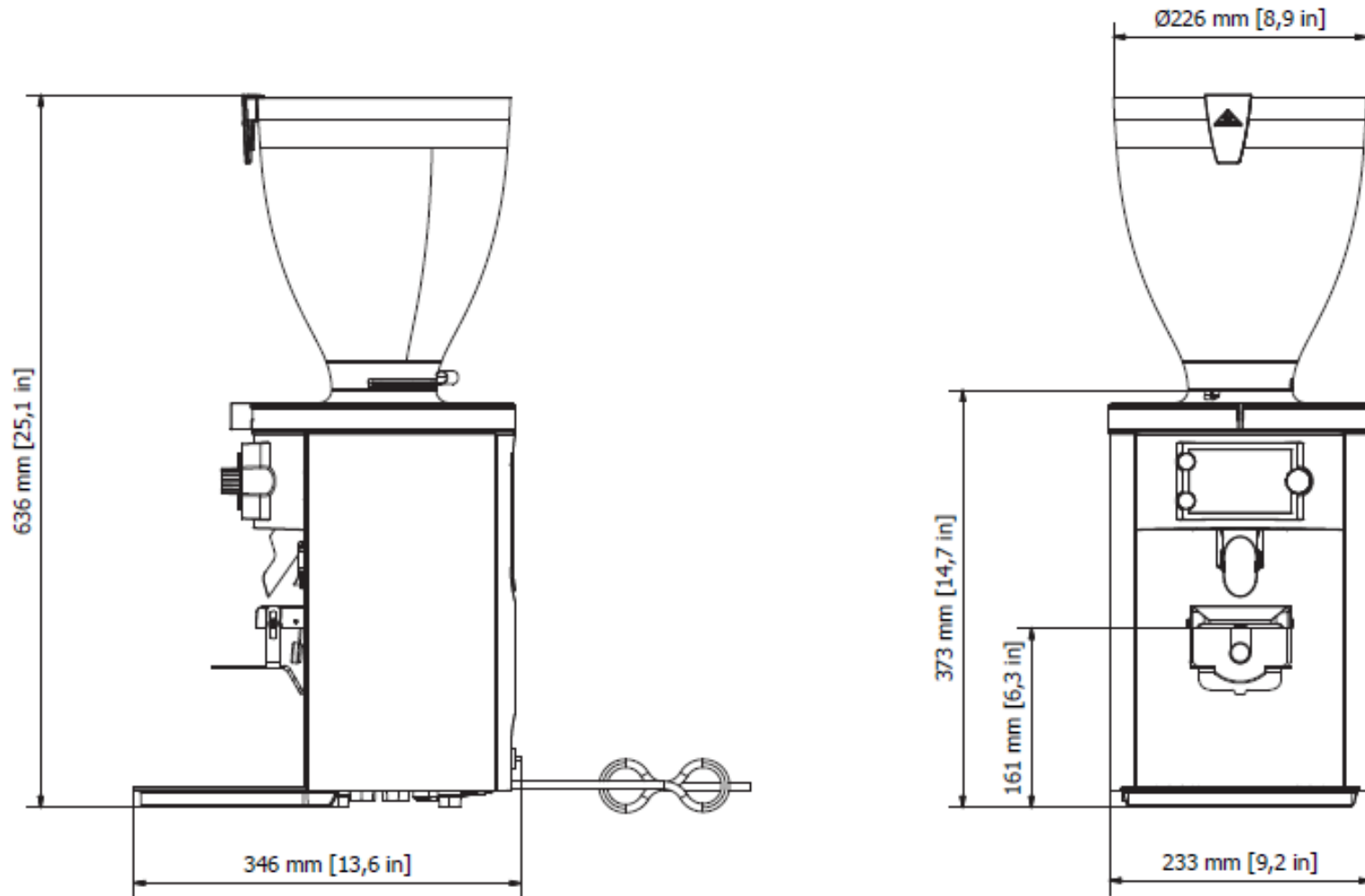
Link:

<https://www.mahlkoenig.de/collections/e80s>

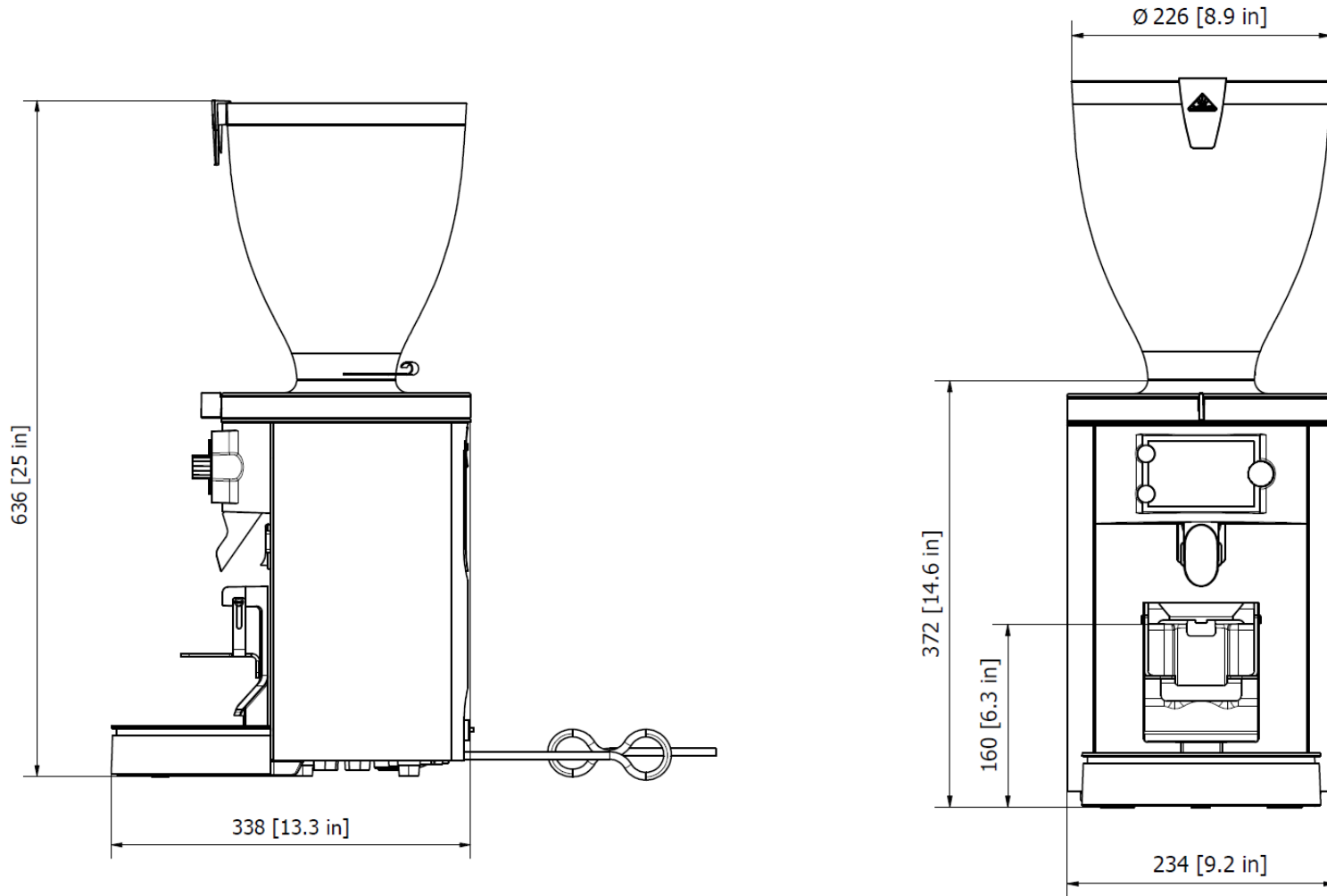
For part or technical support, please contact:

- Service-center
@hemrogroup.com
- Productmanagement
@hemrogroup.com

Mahlkönig E80S: dimensions



Mahlkönig E80S GbW: dimensions

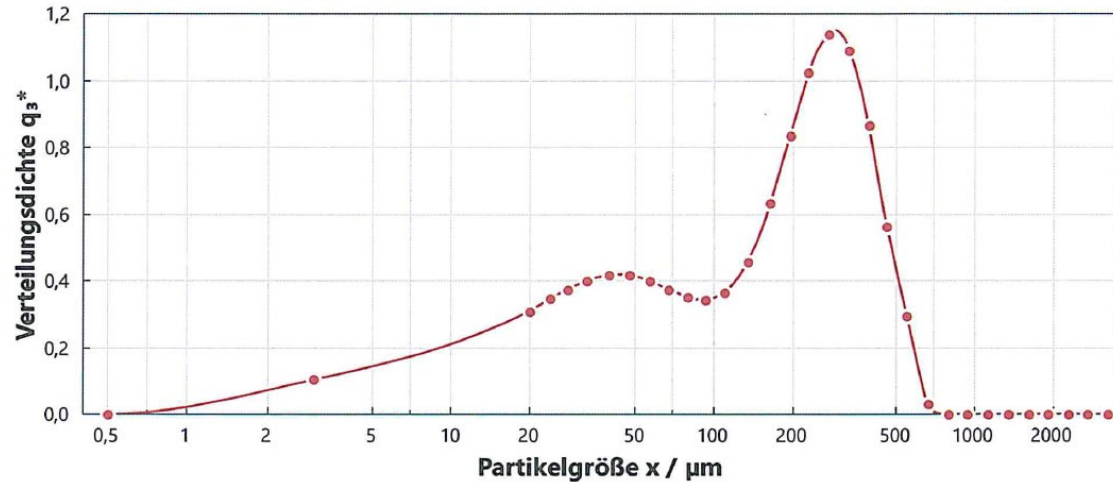


Mahlkönig E80S / GbW: reference particle analysis – finest setting

PARTIKELGRÖSSENVERTEILUNG

PAQXOS 4.1 FREE

$x_{10,3} = 11,33 \mu\text{m}$ $x_{50,3} = 140,88 \mu\text{m}$ $x_{90,3} = 387,36 \mu\text{m}$ $\text{SMD} = 36,91 \mu\text{m}$ $C_{\text{opt}} = 6,68 \%$



SYSTEM

Gerät HELOS (H4132) & RODOS/T4, R7
Referenz 2021-06-09 13:17:01
Software PAQXOS 4.1

DISPERGIERMETHODE

Druck 2 bar
Unterdruck 107 mbar
Drehzahl 0 %

BENUTZERDEF. PARAMETER

Mühle Mahlkönig E80S
Medium Songwa Espresso
Artikel Nr.
Sonstiges Finest setting

TRIGGERBEDINGUNG

Start Kanal 24 $\geq 1,2 \%$
Gültig immer
Stop 5 s Kanal 21 $\leq 1,2 \%$ oder 80 s Echtzeit

Dosierer VIBRI
Förderrate 65 %
Spaltweite 7 mm

KOMMENTAR

Comments:

- Analysis performed on a laboratory Sympatec Helos Laser Diffraction analyzer
- For comparable results to series production image analyzers ca. 60 μm need to be added to the median particle size value x_{50}
- On finest factory setting Mahlkönig E80S produces 200 μm of median particle size**

Mahlkönig E80S / GbW: reference particle analysis – medium setting

PARTIKELGRÖSSENVERTEILUNG

PAQXOS 4.1 FREE

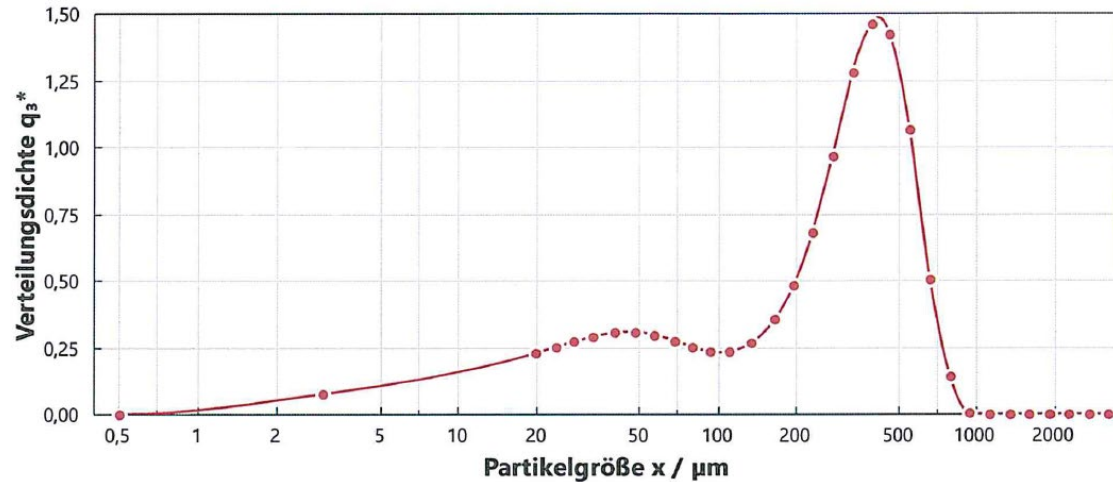
$x_{10,3} = 15,07 \mu\text{m}$

$x_{50,3} = 262,66 \mu\text{m}$

$x_{90,3} = 542,41 \mu\text{m}$

SMD = 48,76 μm

$C_{\text{opt}} = 7,05 \%$



SYSTEM

Gerät HELOS (H4132) & RODOS/T4, R7
Referenz 2021-06-09 13:18:20
Software PAQXOS 4.1

TRIGGERBEDINGUNG

Start Kanal 24 $\geq 1,2 \%$
Gültig immer
Stop 5 s Kanal 21 $\leq 1,2 \%$ oder 80 s Echtzeit

DISPERGIERMETHODE

Druck 2 bar
Unterdruck 107 mbar
Drehzahl 0 %

Dosierer VIBRI
Förderrate 65 %
Spaltweite 7 mm

BENUTZERDEF. PARAMETER

Mühle Mahlkönig E80S
Medium Songwa Espresso
Artikel Nr.
Sonstiges Middle setting (5)

KOMMENTAR

Comments:

- Analysis performed on a laboratory Sympatec Helos Laser Diffraction analyzer
- For comparable results to series production image analyzers ca. 60 μm need to be added to the median particle size value x_{50}
- On medium factory setting Mahlkönig E80S produces 330 μm of median particle size**

Mahlkönig E80S / GbW: reference particle analysis – coarsest setting

PARTIKELGRÖSSENVERTEILUNG

PAQXOS 4.1 FREE

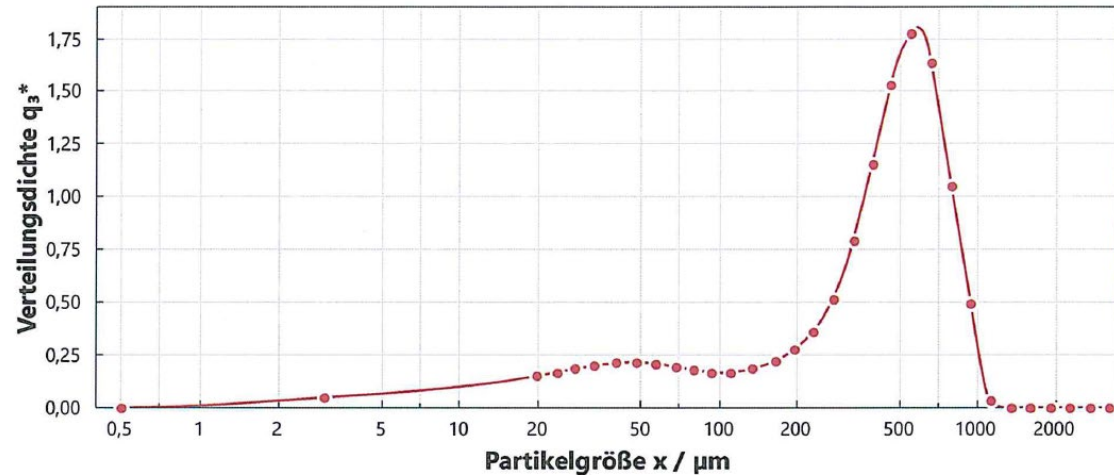
$x_{10,3} = 25,30 \mu\text{m}$

$x_{50,3} = 424,04 \mu\text{m}$

$x_{90,3} = 754,47 \mu\text{m}$

SMD = $72,08 \mu\text{m}$

$C_{\text{opt}} = 6,23 \%$



SYSTEM

Gerät HELOS (H4132) & RODOS/T4, R7
Referenz 2021-06-09 13:19:41
Software PAQXOS 4.1

TRIGGERBEDINGUNG

Start Kanal 24 $\geq 1,2 \%$
Gültig immer
Stop 5 s Kanal 21 $\leq 1,2 \%$ oder 80 s Echtzeit

DISPERGIERMETHODE

Druck 2 bar
Unterdruck 107 mbar
Drehzahl 0 %

Dosierer VIBRI
Förderrate 65 %
Spaltweite 7 mm

BENUTZERDEF. PARAMETER

Mühle Mahlkönig E80S
Medium Songwa Espresso
Artikel Nr.
Sonstiges Coarsest setting (10)

KOMMENTAR

Comments:

- Analysis performed on a laboratory Sympatec Helos Laser Diffraction analyzer
- For comparable results to series production image analyzers ca. $60 \mu\text{m}$ need to be added to the median particle size value x_{50}
- On coarsest factory setting Mahlkönig E80S produces $485 \mu\text{m}$ of median particle size**