



HEMRO Academy

Distributor training: Ditting 807

October 2022



ditting



Content

- 01** Product overview
- 02** Product service
- 03** Information handouts



Ditting 807: model and option overview

Product versions

- 807 : filter coffee bag grinding
- 807 Lab Sweet : laboratory use, cuppings, etc.
- 807 Filter : filter coffee basket grinding

Bean hoppers

- 500g, black color : article 702589
- 500g, smoked color : article 702590

Grinding capacity

- : ca. 9 g/s on median grind setting
- : fine espresso to cold brew

Burr options & grinding speed

- : article 275305 - 80mm special steel (standard 807, 807 Filter)
- : article 105780 - 80mm premium cast steel (standard 807 LS)
- : article 275307 - 80mm special steel dark roast filter

Body colors

- : black matte, white matte

Motor configurations

- 100V 50/60Hz; 1.350 – 1.650 rpm
- 110-127V 60 Hz ; 1.350 – 1.650 rpm
- 220-240V 50/60Hz ; 1.350 – 1.650 rpm

Weight

- : 17.4 kg (net) / 18.8 kg

Dimensions

- : 216 x 536 x 300 mm

Packaging dimensions

- : 292 x 685 x 377 mm



Ditting 807: notable features at a glance

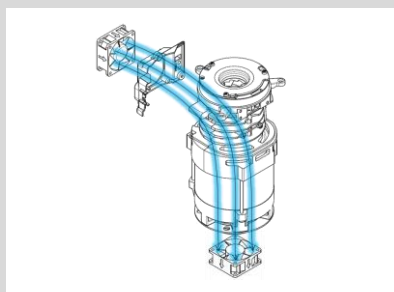
Ease of maintenance and service



Wide grinding range from fine espresso to cold brew



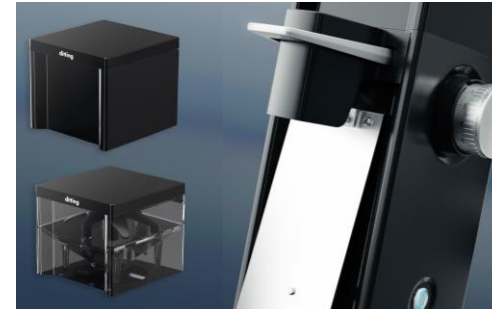
Steel and cast burr options for high output & best taste



Dual-fan cooling for high output & consistency



Premium design with durable components



Highest electrical safety and food hygiene standards

Ditting 807: key sales arguments

Wide grinding ability from very fine espresso recipes <200µm particle size to coarse cold brew recipes with median particle size >900µm **and high grind output** of ca. 500gs / 2 lbs. per minute

Supreme extraction and taste due to unique burr geometry and cast steel burr options that withstand over 2.5 tons of grinding before losing performance
→ **global gold standard for high-quality specialty coffee grinding**

Low retention design and strong dosing consistency due to dual-fan active cooling for temperature stability even during higher load periods

Premium design and material quality **with low-effort service access** to frequent replenishment parts, e.g. burrs, flapper, spout

Content

- 01 Product overview
- 02 Product service**
- 03 Information handouts



Disclaimer



WARNING:

The contents shown in this section are meant to support qualified technicians and trained staff only. Only parts that comply with the original appliance specification may be used for repairs. Errors in opening or assembling the machine may cause injuries and/or damages and malfunctions. If the machine is opened by an unauthorized person the manufacturer's liability and warranty expire.

Often overlooked in the quest for best taste and operations performance: the relevance of equipment maintenance

Benefits of regular grinder maintenance

More aroma extraction due to lower grinding temperatures

Exact recipe execution due to higher dosing consistency

Clearer taste due to lack of coffee residues and cross contamination

Reduced costs due to longer equipment life, esp. burrs

“Insufficient maintenance of key equipment always results in poor quality in the cup regardless of raw materials”

Hemro service resources: spare part list in the Ditting website dealer section and YouTube service videos

ERSATZTEILLISTE | SPARE PARTS LIST

Version 1.1

807 | 807 LAB SWEET | 807 FILTER

100 V 50/60 Hz | 110-127 V 60 Hz | 220-240 V 50/60 Hz

QR CODE

807 INFORMATION

QR CODE

807 LAB SWEET INFORMATION

QR CODE

807 FILTER INFORMATION

807

*exempl. Abb. | example Fig.

Bei Bestellungen bitte unbedingt die Artikel- und Seriennummer angeben.

Please indicate the article- and serial number when ordering.

WARNUNG:

Diese Ersatzteilliste richtet sich ausschließlich an qualifizierte Techniker und geschultes Fachpersonal. Fehler beim Öffnen oder Montieren der Mühle können zu Verletzungen und/oder Beschädigungen und Fehlfunktionen führen. Bei Reparaturen dürfen nur Teile verwendet werden, die den ursprünglichen Gerätedaten entsprechen.

Mit dem Öffnen der Mühle durch eine nicht autorisierte Person, erlöschen die Haftungs- und Garantiesprüche gegenüber dem Hersteller.

WARNUNG:

This spare part list is meant to support qualified technicians and trained staff only. Only parts that comply with the original appliance specification may be used for repairs. Mistakes in opening or assembling the grinder may cause injuries and/or damages and malfunctions.

If the grinder gets opened by an un-authorized person, the manufacturer's liability and warranty expire.

gültig ab | valid from

2020-05-01

Änderungen ohne Vorankündigung vorbehalten. | Subject to change without prior notice.

HEMRO

Hemro International AG

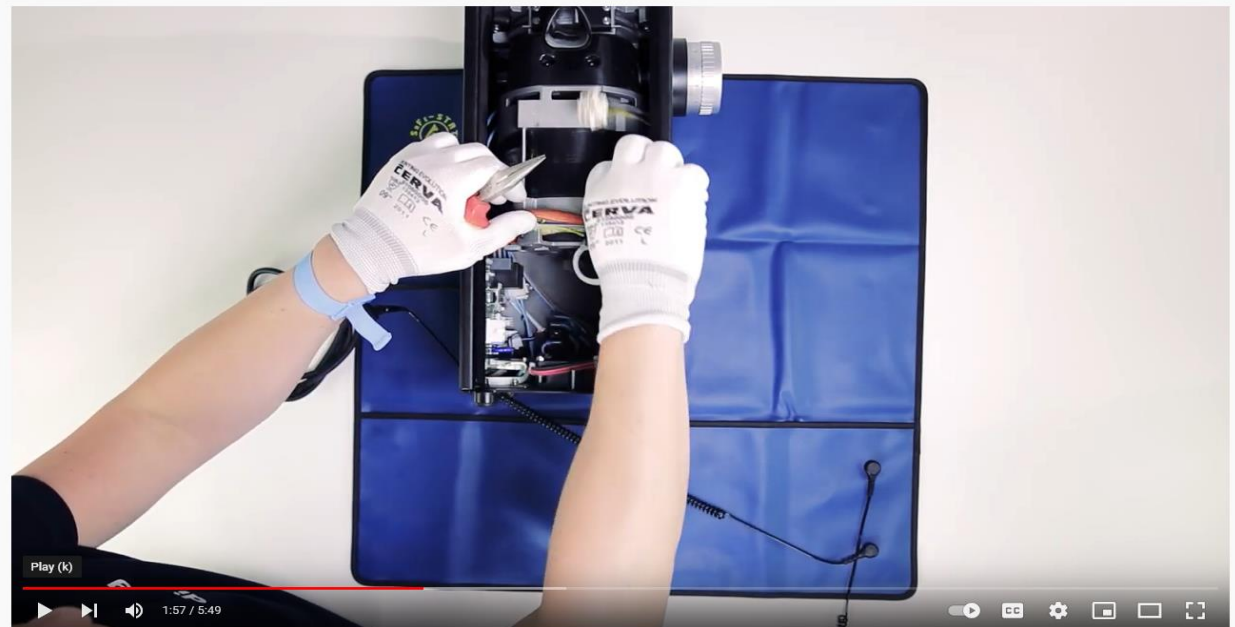
Länggasse 34 | 8184 Hochschulen, Switzerland

T: +41 44 804 18 00 | F: +41 44 804 18 01

info@hemrogroup.com | www.hemrogroup.com

ditting

807 FILTER CAPACITOR REPLACEMENT	807 FILTER BURR REPLACEMENT	807 FILTER GRIND SIZE CALIBRATION	807 LAB SWEET CAPACITOR REPLACEMENT	807 CALIBRATION	807 BURR REPLACEMENT
SERVICE 5:50	SERVICE 3:02	SERVICE 1:22	SERVICE 5:30	SERVICE 1:26	SERVICE 2:34
Ditting 807 FILTER Capacitor replacement	Ditting 807 FILTER Burr replacement	Ditting 807 FILTER Grind size calibration	Ditting 807 LAB SWEET Capacitor replacement	Ditting 807 Calibration	Ditting 807 Burr replacement
84 views • 4 months ago	100 views • 4 months ago	296 views • 4 months ago	193 views • 4 months ago	571 views • 4 months ago	181 views • 4 months ago



Ditting 807 FILTER | Capacitor replacement



YouTube Service & Repair Ditting 807

https://www.youtube.com/channel/UCArXT2Sw67_qXUzmzp9ZPuQ

Hemro service resources continued: Product Management Sharepoint for most recent documentations and knowledge

HEMRO Hemro - Product Management

+ New Page details Analytics



Hemro Group - Article Number Locator **Brand Logos - Download**

For technical support and product management representatives please contact

PM Product Management

Hemro Group - Sales Representatives

FS Felix Schmid (HEMRO Group) Sales Director France & LATAM	AC Alessandro Conti (HEMRO Group) Sales Manager APAC	SO Szilvia Ozsvath (HEMRO Group) Interim Sales Manager DACH	DC Deniz Cagaptay (HEMRO Group) Sales Director Northern Europe & Middle East
SG Samuel Grant (HEMRO Group) Sales Director US & Canada	HY Helen Yuen (HEMRO Group) Sales Manager China	MA Marco Antonelli (HEMRO Group) Sales Director South Europe & Africa	RQ Ross Quail (HEMRO Group) Head of Sales Asia Pacific

Documents > 02_Ditting > 807

- || Name ▾
- 01_Product presentation
 - 02_Product pictures and 3D models
 - 03_Instruction manuals
 - 04_Spare parts
 - 05_Service videos & FAQs

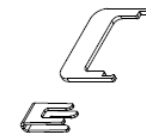
Downloadable knowledge repository for all of Hemro's products including most recent:

- Product presentations
- Product pictures
- Instruction manuals
- Spare part lists, recommended spare part lists, spare part locator tools
- Service videos, frequently asked questions, How-To's, wiring diagrams, etc.

If you do not yet have access, please reach out to productmanagement@hemrogroup.com to receive it today

Ditting 807: key tools & accessories

- **Burr removal tool** to lift grinding burrs out of grinding chamber
 - Article 703290



- **Food-safe lubrication** for motor shaft and grind size adjustment parts
 - Article 105168 (Kluber grease)
 - Article 309336 (Kluber lubrication)



- **GRINDZ** grinder cleaner for regular service
 - Article 101853



- **Ground coffee cup Lab Sweet**
 - Article 702563



Ditting 807: build overview and frequent service parts

Flapper : article 702649

Spout springs : article 703395

Spout clamping piece : article 702554

Burrs:

- special steel : article 275305 (standard 807, 807 Filter)
- premium cast steel : article 105780 (standard 807 LS)
- special steel dark roast : article 275307

Electronics

Start & Stop switch : article 702584

Overcurrent switches:

- 100V : article 702383
- 110-127V : article 308383
- 220-240V : article 309551

Capacitors:

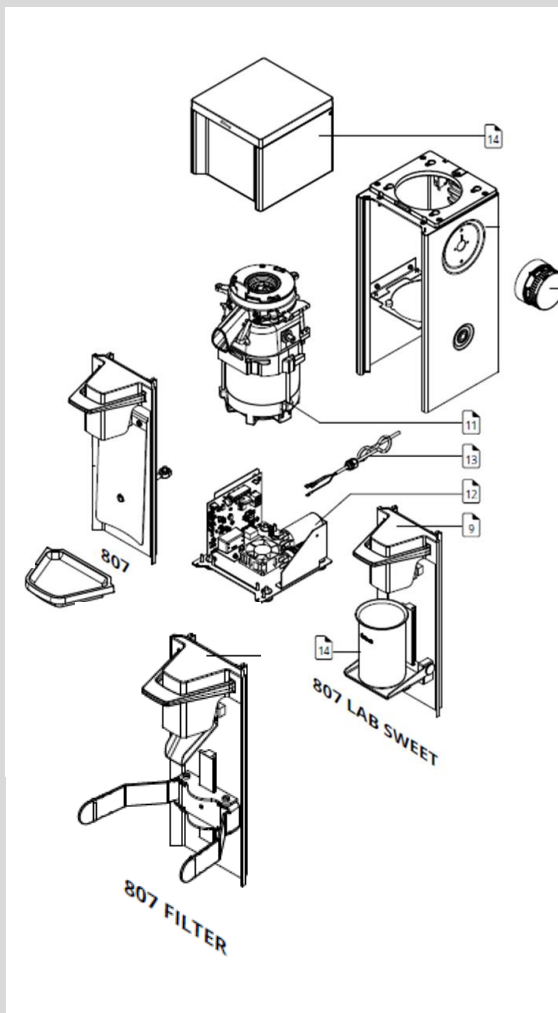
- 100-127V : articles 702579
- 220-240V : articles 702577

Power board: article 702580

Contactor 100-127V:

Article 702581

Overview grinder construction



Ditting 807: frequently encountered problems

Problem : Grind size adjustment dial wheel is “scraping” on surrounding housing parts

Cause : adjustment dial wheel fixation is loose or was fastened off-center

Solution : loosen adjustment dial wheel fixation, re-renter dial wheel and fasten again

Problem : Espresso grind size is not fine enough for very light roast / green espresso / espresso single dosing

Causes : Grinder is not properly calibrated or rotary burr carrier is out of tolerance

Solutions : Manually recalibrate to a finer grind setting

: Replace rotary burr carrier if out of tolerance to a degree where espresso fineness <200µm is no longer possible

Comment : Lack of fineness due to carrier tolerances is a very rare occurrence mostly encountered among single dosing super premium espresso users customers. While the 807 may be used for espresso single dosing, it is not specially intended for this use case. An empty bean hopper yields lower pressure into the grinding house than a filled one and no active bean feeding mechanism coupled with a flapper construction are factors to consider when approaching single dosing espresso users.

Content

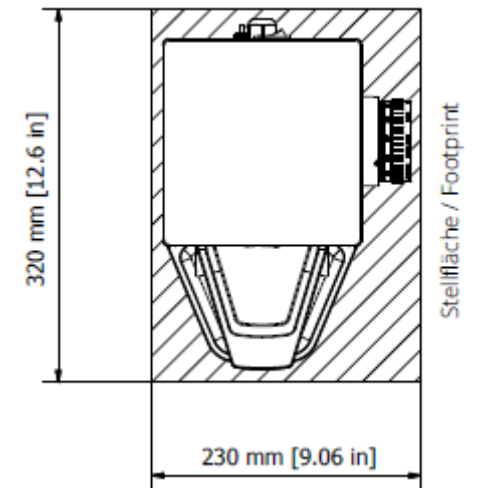
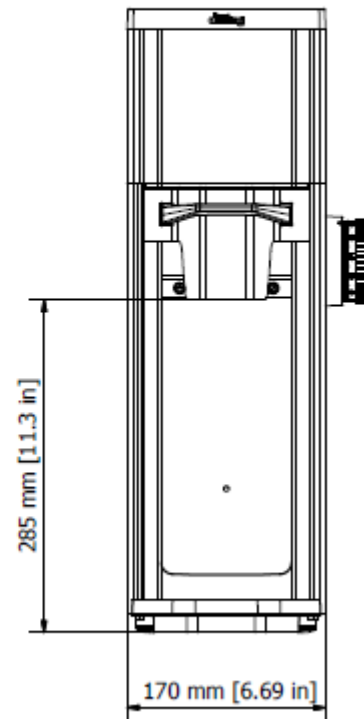
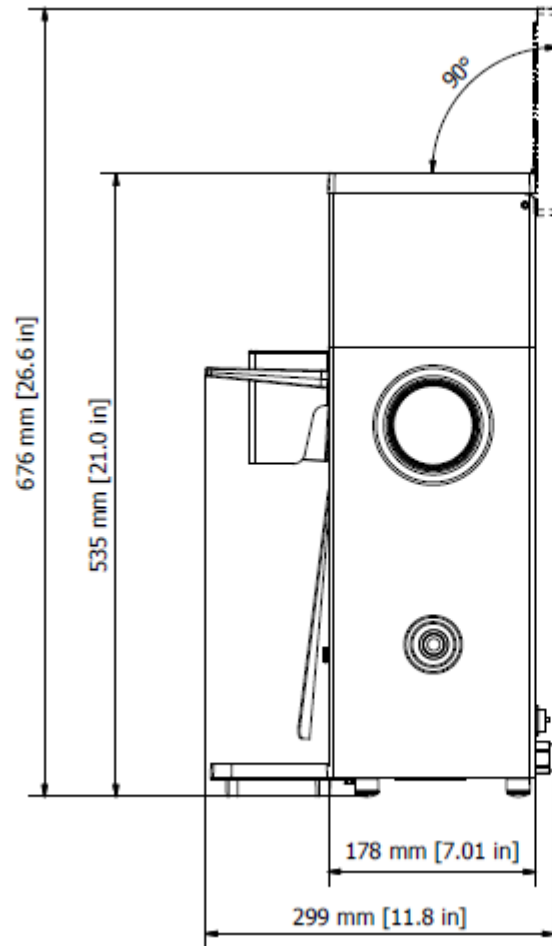
- 01 Product overview
- 02 Product service
- 03 Information handouts**



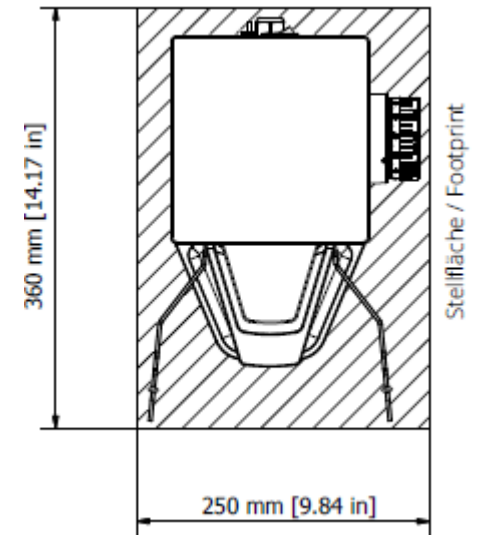
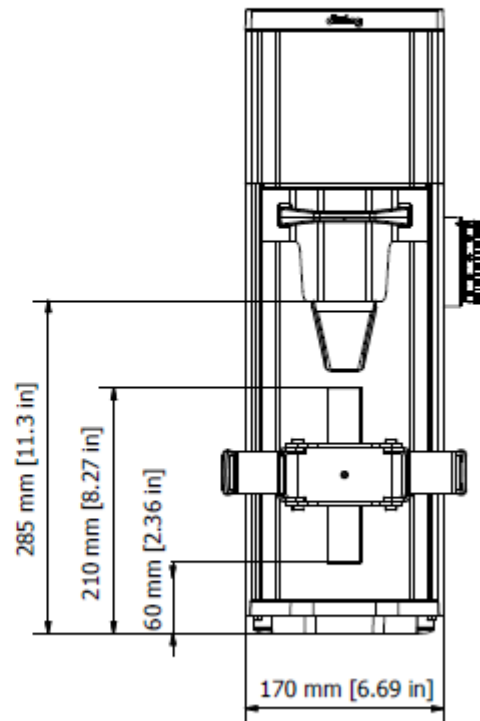
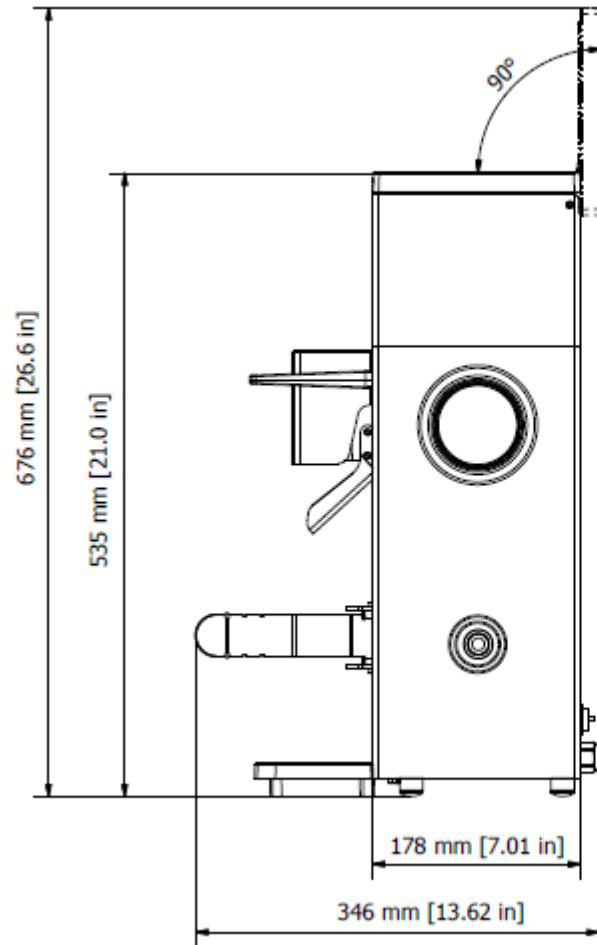
Recommended tools for performing Hemro maintenance and service

Tools	Reference parts
<ul style="list-style-type: none"> ▪ 1x ¼ inch torque wrench ▪ 1x universal ¼ inch bit set in short and long configurations ▪ 1x 13mm combination wrench ▪ 1x Wire cutter ▪ 1x Telescope magnet for lost screws ▪ 1x Cable stripper ▪ 1x Long pliers ▪ Pulling tool Mahlkönig EK43, DK15, VTA6S ▪ Pulling tool Mahlkönig Guatemala 2.0 ▪ Burr change tool 65mm (Mahlkönig E65S, Mahlkönig E65S GbW, Anfim Pratica, Anfim Solida) ▪ Burr change tool 80mm (Mahlkönig E80, Mahlkönig E80 GbW, Ditting 807) ▪ Burr alignment tool Mahlkönig K30x ▪ Burr alignment tool Mahlkönig EK43 ▪ Special grease NSF/H1 50g ▪ Special lubrication NSF/H1 60g ▪ Soft bristle brush ▪ Multimeter (20A) ▪ Digital coffee scale ▪ Windows-PC for software updates 	<ul style="list-style-type: none"> ▪ Würth 071471 91 ▪ Würth 061425059 ▪ Würth 071330213 ▪ Würth 071401571 ▪ Würth 07153535 ▪ Würth 071401570 ▪ Würth 071401578 ▪ Hemro 703750 ▪ Hemro 703048 ▪ Hemro 700974 ▪ Hemro 703290 ▪ Hemro 306590 ▪ Hemro 105866 ▪ Hemro 105168 ▪ Hemro 309336 ▪ / - Any ▪ / - Any ▪ / - Any ▪ / - Any

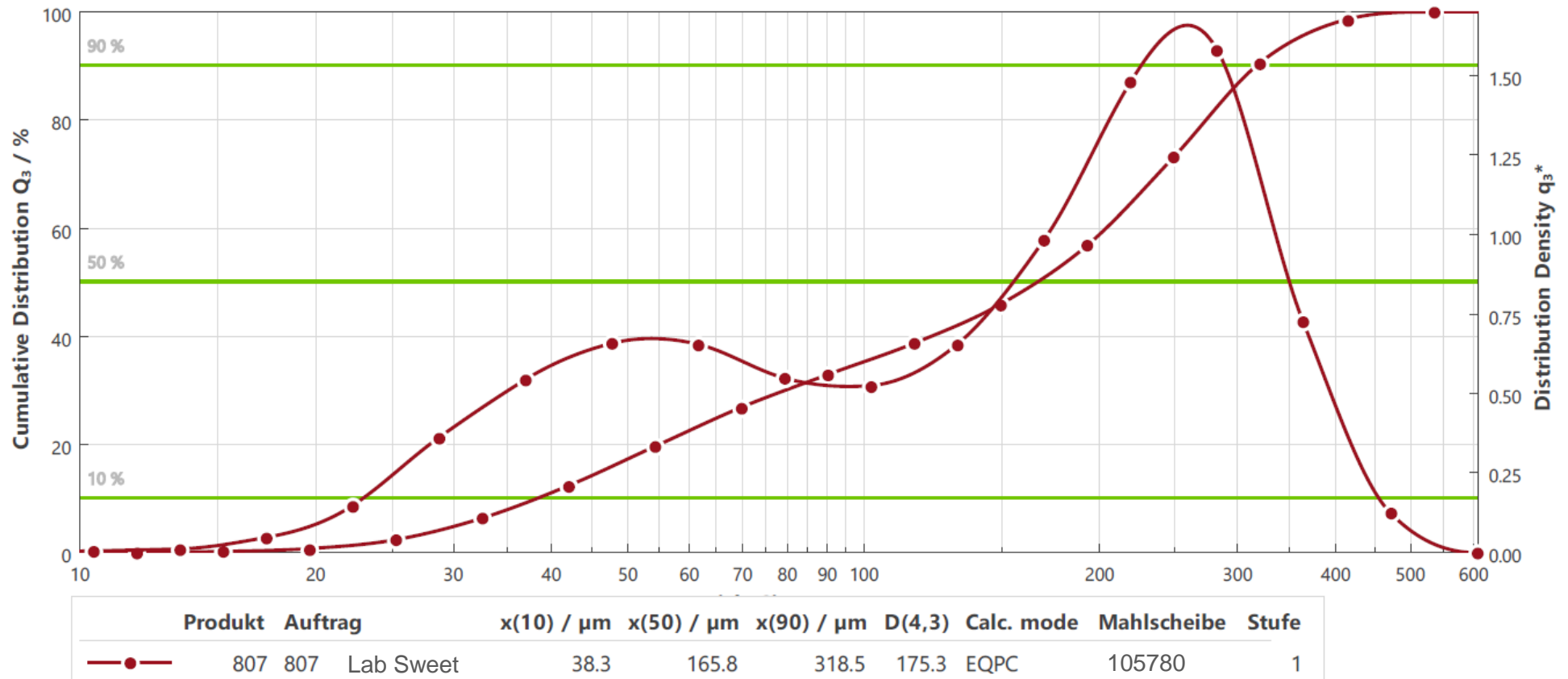
Ditting 807 Standard & Lab Sweet: dimensions



Ditting 807 Filter: dimensions

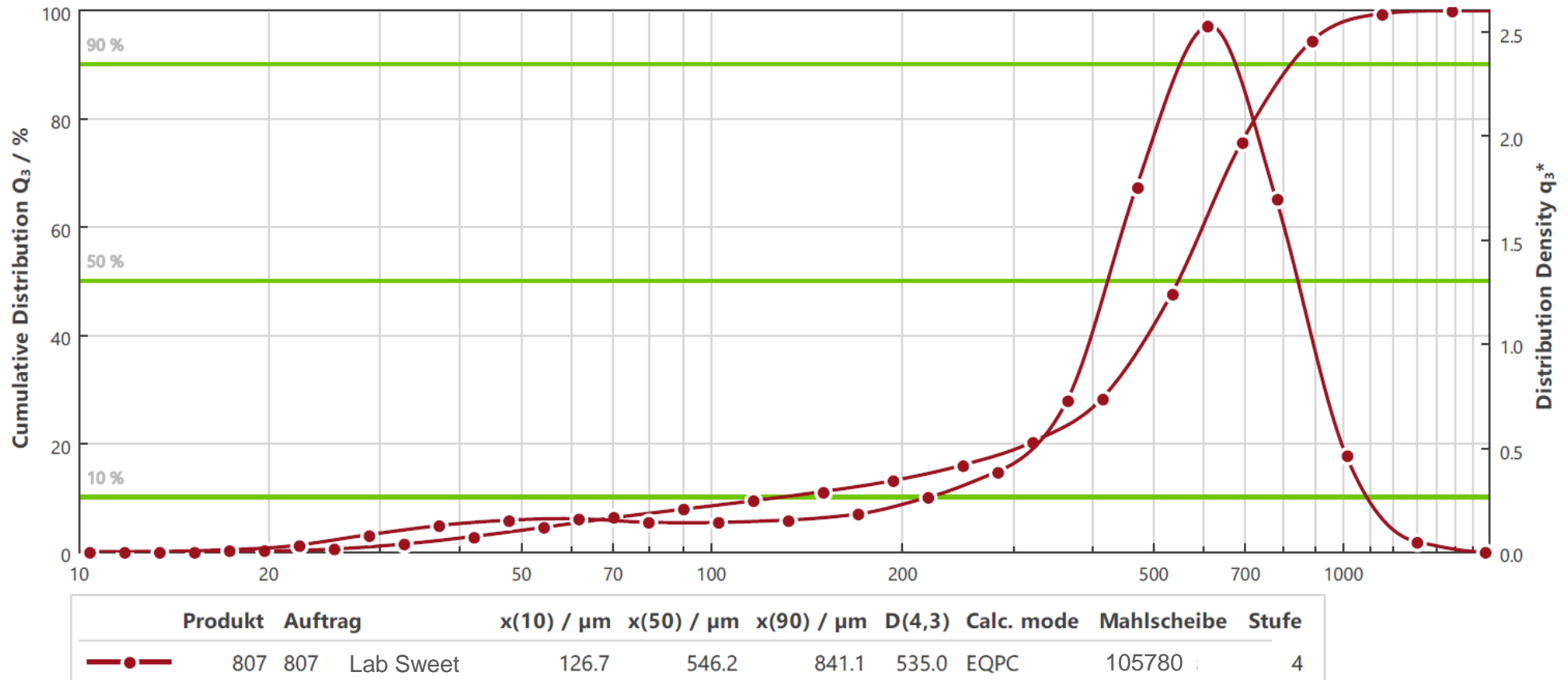


Ditting 807 Lab Sweet: reference particle analysis – finest setting (1)



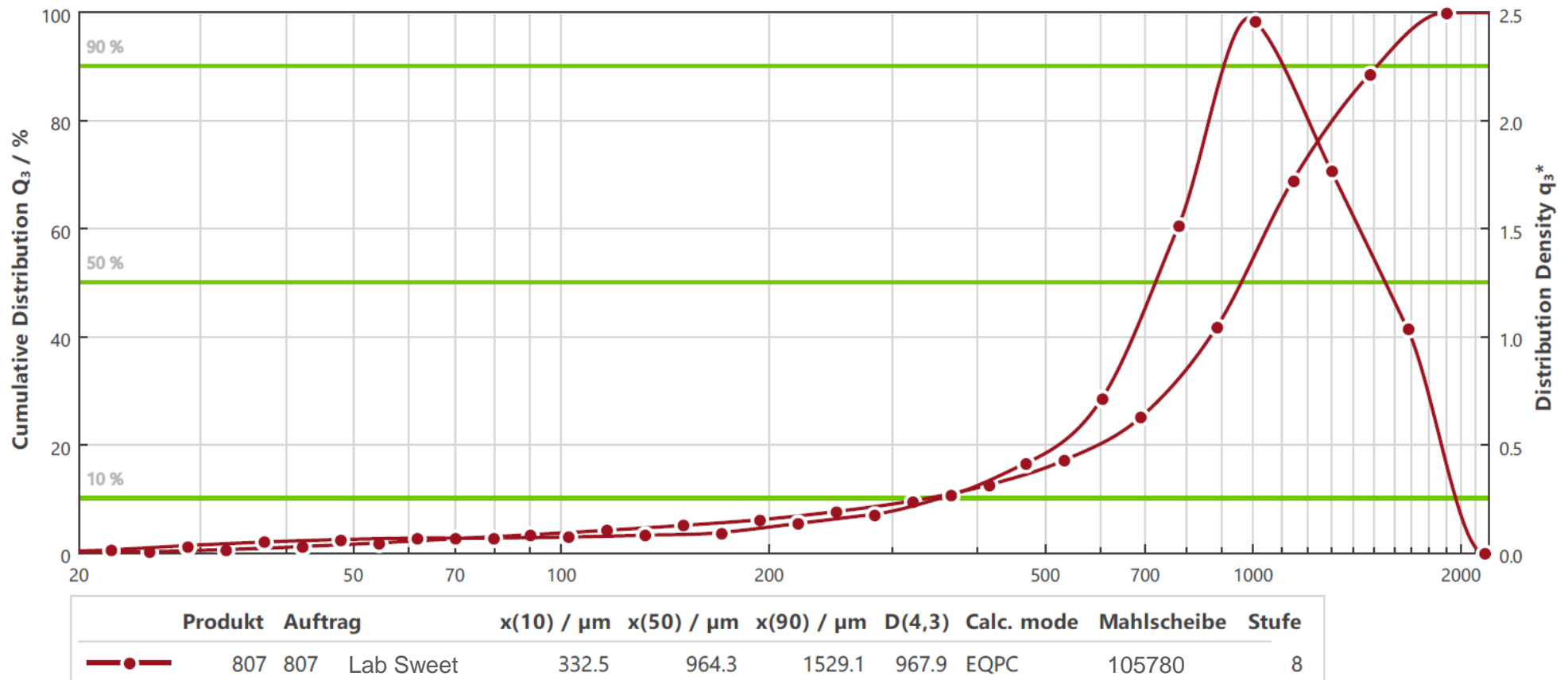
- Analysis performed on a laboratory Beckman Coulter Laser Diffraction analyzer
- **On finest factory setting Ditting 807 produces ca. 160 μm of median particle size**

Ditting 807 Lab Sweet: reference particle analysis – medium setting (4)



- Analysis performed on a laboratory Beckman Coulter Laser Diffraction analyzer
- **On medium factory setting Ditting 807 produces ca. 550µm of median particle size**

Ditting 807 Lab Sweet: reference particle analysis – coarse setting (8)



- Analysis performed on a laboratory Beckman Coulter Laser Diffraction analyzer
- **On coarse factory setting Ditting 807 produces ca. 965μm of median particle size**